



Excellent Design & Manufacture

## Level Detectors

### EDM mechanical level detectors

are rugged, industrial products specifically designed for versatility of application. This catalog contains application and ordering data for float and displacer-operated level detectors. Detectors are available with flanged or sealed chambers or as insertion models.

Options available for each type of detector include: detector type and number, housing type, chamber material, process connections, accessories, and more. Units may be customized to suit customers' needs.

Inside this catalog you will find solutions to your level sensing puzzles. EDM mechanical level detectors have many configurations available. If you don't see what you need, we will engineer a solution for your application.



### Features and Benefits

- Five-year warranty
- ASME Section IX and AWS qualified welding system
- Designed to ANSI/ASME B31.1 and B31.3 guidelines
- Hermetically sealed detecting mechanisms available
- Stainless steel detecting mechanisms
- High-temperature capability
- Wide variety of explosion-proof housings
- Versatile detecting mechanisms which retro-fit into other manufacturers' units
- Worldwide listings and certifications
- Quick worldwide delivery
- Only ASTM grade materials with certified mill test reports used
- GOST R Certificate for Russia
- Safety Certified to IEC 61508 (SIL)  
EDM products are certified to IEC 61508 for non-redundant use in SIL1 and SIL2 Safety Instrumented Systems for most models. For more details or values applicable to a specific product, see the Safety Integrity Level Quick Guide .

**EX3008-780009-780** mechanical level detectors are float operated, horizontal mounted with sealed,tamper-proof or flanged, serviceable chambers.

Model Number System

# EX3008-780009-780

Maximum Working Pressure

Chamber Material	Pressure at Listed Temperature in psig (bar)*					
	100°F (38°C)	200°F (93°C)	300°F (149°C)	350°F (177°C)	400°F (204°C)	450°F (232°C)
A106B	1794 (123.6)	1794 (123.6)	1794 (123.6)	1794 (123.6)	1794 (123.6)	1794 (123.6)

Product Specifications

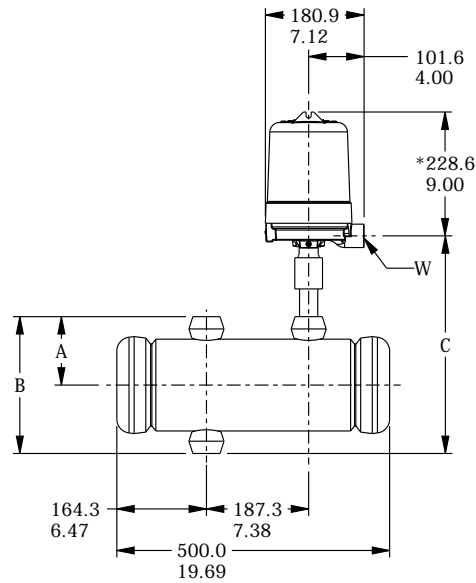
Chamber Material		Trim Material	
A106B Carbon Steel		Float/Displacer Material	316/316L SS
with A105 and A234-WPB fittings		Attraction Sleeve	400 SS
Housing		Detecting Mechanism	
General Purpose, NEMA 4 Housings		Detecting Description	
Enclosure Rating	NEMA 4, 4x (IP66)	Extra-High Temperature (Ceramic)	
Description	Aluminum	Detector Designator	SPDT
Electical/Pneumatic Connections	1” NPT	Minimum Temperature	-40°F (-40°C)
Process Connection		Maximum Temperature	900°F (482°C)
	Size	1”	Detector Ratings
	Style	Socket Weld	
Minimum Specific Gravity	0.65		

Accessory Compatibility Chart

Description
6"SCH. 160 CS CHAMBER
12 Ga. Float

## Chamber Dimensions

Dimensions listed are for reference only and are expressed as millimeters over inches. (Linear = mm/in.)



Connection Size	A	B	C
	inch (mm)	inch (mm)	inch (mm)
1"	4-15/16 (125)	9-7/8 (250)	15-5/8 (396)